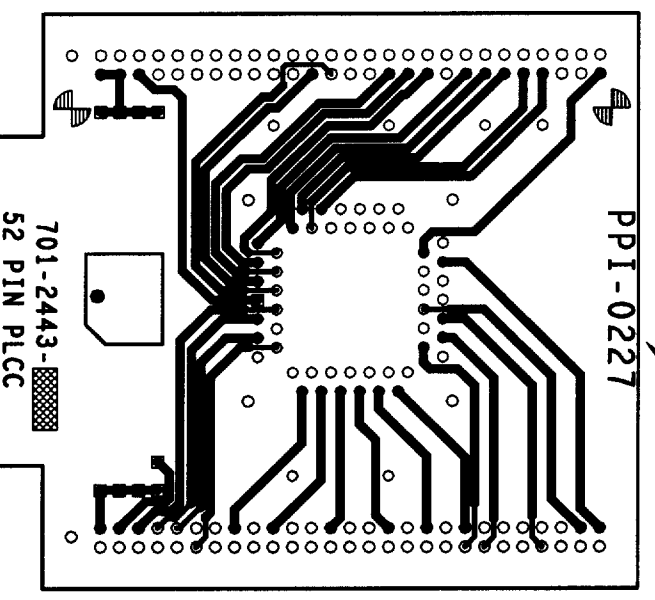


REWORK INSTRUCTIONS FOR 410-2443-001.
 ALSO APPLIES WHEN CONVERTING
 PPI-0227 TO BECOME PPI-0265.

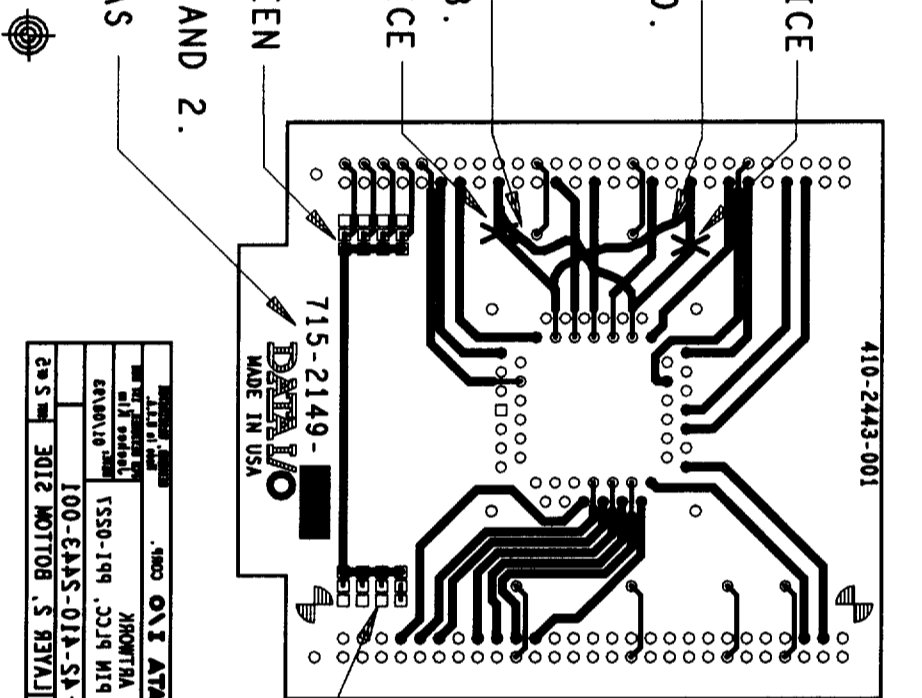
RE IDENTIFY AS PPI-0265



DATA I/O COMP.		DESIGNER	DESIGNED	DATE
FILE	ARTWORK	Johnnie Kim	Johnnie Kim	09/28/93
52 PIN PLCC, PPI-0227		Johnnie Kim	Johnnie Kim	09/28/93
		Johnnie Kim	Johnnie Kim	09/28/93
42-410-2443-001		Johnnie Kim	Johnnie Kim	09/28/93
LAYER 1, TOP SIDE		Johnnie Kim	Johnnie Kim	09/28/93

REWORK INSTRUCTIONS FOR 410-2443-001
 ALSO APPLIES WHEN CONVERTING
 PPI-0227 TO BECOME PPI-0265

- 1) CUT FROM DEVICE
PIN 18.
- 2) RECONNECT TO
DEVICE PIN 10.
- 3) RECONNECT TO
DEVICE PIN 18.
- 4) CUT FROM DEVICE
PIN 10.
- 5) CUT TRACE BETWEEN
PADS 2 AND 3.
CONNECT PADS 1 AND 2.
- 6) REMOVE SOLDER BRIDGE
FROM PADS 2 AND 3.
RECONNECT PADS 1 AND 2.



REV	DATE	BY	CHKD	DESCRIPTION
1				INITIAL RELEASE
2				ISSUED FOR PRODUCTION
3				ISSUED FOR PRODUCTION
4				ISSUED FOR PRODUCTION
5				ISSUED FOR PRODUCTION
6				ISSUED FOR PRODUCTION
7				ISSUED FOR PRODUCTION
8				ISSUED FOR PRODUCTION
9				ISSUED FOR PRODUCTION
10				ISSUED FOR PRODUCTION
11				ISSUED FOR PRODUCTION
12				ISSUED FOR PRODUCTION
13				ISSUED FOR PRODUCTION
14				ISSUED FOR PRODUCTION
15				ISSUED FOR PRODUCTION
16				ISSUED FOR PRODUCTION
17				ISSUED FOR PRODUCTION
18				ISSUED FOR PRODUCTION
19				ISSUED FOR PRODUCTION
20				ISSUED FOR PRODUCTION
21				ISSUED FOR PRODUCTION
22				ISSUED FOR PRODUCTION
23				ISSUED FOR PRODUCTION
24				ISSUED FOR PRODUCTION
25				ISSUED FOR PRODUCTION
26				ISSUED FOR PRODUCTION
27				ISSUED FOR PRODUCTION
28				ISSUED FOR PRODUCTION
29				ISSUED FOR PRODUCTION
30				ISSUED FOR PRODUCTION
31				ISSUED FOR PRODUCTION
32				ISSUED FOR PRODUCTION
33				ISSUED FOR PRODUCTION
34				ISSUED FOR PRODUCTION
35				ISSUED FOR PRODUCTION
36				ISSUED FOR PRODUCTION
37				ISSUED FOR PRODUCTION
38				ISSUED FOR PRODUCTION
39				ISSUED FOR PRODUCTION
40				ISSUED FOR PRODUCTION
41				ISSUED FOR PRODUCTION
42				ISSUED FOR PRODUCTION
43				ISSUED FOR PRODUCTION
44				ISSUED FOR PRODUCTION
45				ISSUED FOR PRODUCTION
46				ISSUED FOR PRODUCTION
47				ISSUED FOR PRODUCTION
48				ISSUED FOR PRODUCTION
49				ISSUED FOR PRODUCTION
50				ISSUED FOR PRODUCTION

RE IDENTIFY AS
 715-3794-001